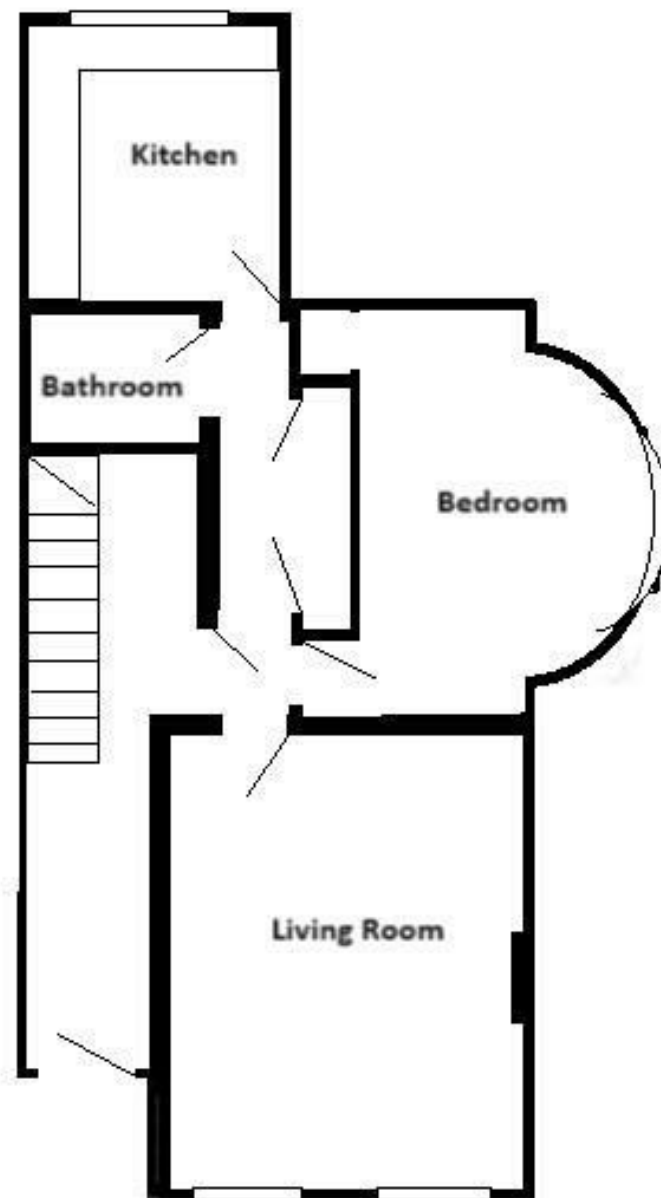


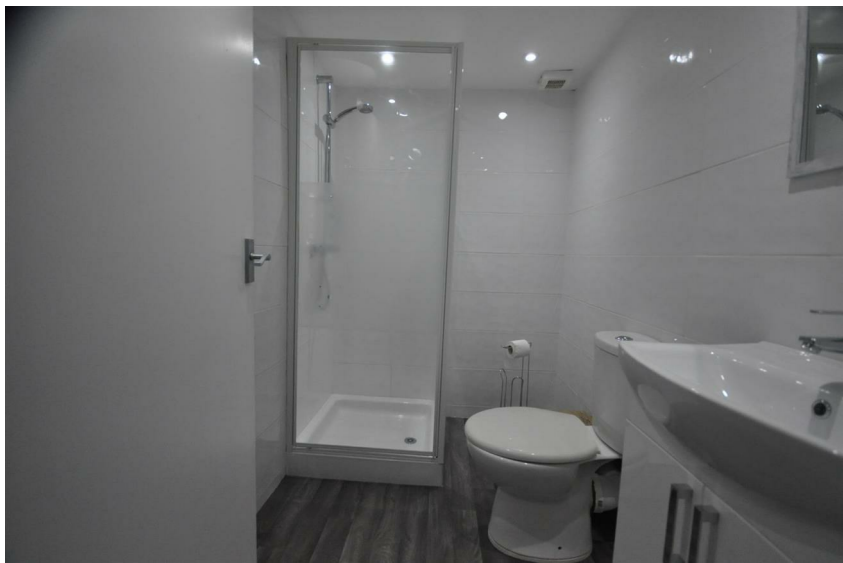
FLAT 2, 60 GROSVENOR STREET, CHELTENHAM, GL52 2SG

£1,050 PCM

CHELTENHAM BOROUGH COUNCIL COUNCIL TAX BAND A

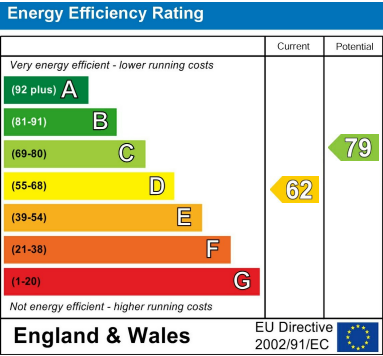


Flat 2, 60 Grosvenor Street, GL52 2SG



PLEASE EMAIL YOUR ENQUIRY IN THE FIRST INSTANCE - A recently refurbished period apartment in the centre of town. This period property has been refurbished to a very high standard and offers very spacious accommodation. The property consists of a very spacious lounge with two large sash windows, high ceilings with ornate coving and a feature fireplace. The large bedroom has a curved wall with single wardrobe and storage cupboards. The hallway leads to a shower room and refurbished kitchen with white goods included. This property is carpeted in the living spaces along with new vinyl in hallway and kitchen, its spacious, well presented and if you are looking for a period property central to Cheltenham then its worth a look.





Sure Property Group
23 Bath Street, Cheltenham
GL50 1YA
01242 241200
info@surecheltenham.co.uk